

Volume 1, Issue 1

Research Article

Date of Submission: 15 May, 2026

Date of Acceptance: 15 June, 2026

Date of Publication: 26 June, 2026

The Symbolized Meaning and Comparison Between Colorado Grand Canyon and Yarlung Zangbo Daxiagu

Henghua Yan* 

Freelance worker, Wuxi City 214043, China

*Corresponding Author:

Henghua Yan, Freelance worker, Wuxi City 214043, China.

Citation: Yan, H. (2026). The Symbolized Meaning and Comparison Between Colorado Grand Canyon and Yarlung Zangbo Daxiagu. *J Clim Change Disaster Risk Resil Stud*, 1(1), 01-06.

Abstract

By comparison between Colorado Grand Canyon and Yarlung Zangbo Daxiagu, it could be found many interesting feature supporters of celestial body of the Earth for human race to be the top species of it, such as the gyrus and sulcus of human brain and transverse colon, descending colon, sigmoid colon and rectum.

Based on the comparison between Colorado Grand Canyon and Yarlung Zangbo Daxiagu, it is reasonable to deduce that Colorado Grand Canyon, including the rest of Cordillera mountains, would have been evolved from the semisolid substance of colorful and abundant heavy mental elements in the deep layers of mantle rather than the hypothesis of the uprising of western edge of ancient American plate (wider north and narrower south) caused by the collision between it and the Pacific Ocean floor plate that popularized in geoscience circle. The birth of the magical and incredible great scene of the Cordillera mountains on the western edge of the ancient American plate (wider north and narrower south) by pattern of differential mutation should be thankful to the celestial body love event happened between the XmoonAi (the predecessor of the Moon) and the unique supercontinent of the Earth 66 Ma ago.

Keywords: Colorado Grand Canyon, Yarlung Zangbu Daxiagu, American Cordillera Mountains, Horseshoe Bend, gyrus and sulcus, Colon, Supercontinent, XmoonAi

Introduction

Have you ever been fascinated by the colorful and magical sculpts of the Colorado Grand Canyon and wondered how did they came into being on the Earth? Actually, they formed from semisolid substances in the deep layers of mantle that were sprayed out and piled on the western edge of ancient American plate (wider north and narrower south) by the celestial body love incident happened between the XmoonAi (the predecessor of the Moon) and the unique supercontinent of the Earth 66 Ma ago.

Text

The Difference Between the Colorado River (the Former) and the Yarlung Zangbo River (the Latter) [1].

The former is located on the ancient North American plate of Western Hemisphere; the latter is located on the ancient Asian plate of Eastern Hemisphere. It is shown by Figure 1 as follows,



Figure 1: The Location Difference of The Colorado River and The Yarlung Zangbo River

The flow direction of the former is from the northeast to the southwest, while the counterpart of the latter is from the west to the east mainly. The former originated from the Colorado Plateau with its end pouring into the gulf of California, while the latter originated from the Himalaya mountains with its extending end pouring into the Bay of Bengal. The direct inducement of former is the formation of the Colorado Plateau, while the counterpart of latter is the formation of the Tibetan plateau. There is a horseshoe-shaped grand bend surrounding the Nnamjagbarwa mountain that altered the flowing direction of Yarlung Zangbo river to the southwards. It is shown by Figure 2 as follows,



Figure 2: The Horseshoe-Shaped Grand Bend Surrounding the Nnamjagbarwa Mountain

The Different and Similar Features Between the Horseshoe Bend of Colorado Grand Canyon (the former) and the Horseshoe-Shaped Bend (Guoguo tang bend) of Yarlung Zangbo Daxiagu (the latter) [2]. It is shown by Figure 3 as follows,



Figure 3: The Comparison Between the Horseshoe Bend of Colorado Grand Canyon and Guoguo tang Bend of Yarlung Zangbo Daxiagu

The Different Features of Them are Listed Below

- The rock of former is baldness and the counterpart of latter is covered with deep green vegetation
- The top end of rock of former is flat and the counterpart of latter is tapered mountain

- The water flow of former is gentle with a small drop in elevation and the counterpart of latter is rapid with a large drop in elevation
- The rock of former was composed of Iron and manganese elements mainly which resulted red color with much younger geological age while the counterpart of latter was composed of ancient Asian plate with the older geological age
- The Cordillera mountains on which the former is located originated from the semisolid substances in deep layers of the mantle with birth pattern of differential mutation and have no obvious sign of uprising activation, while the Tibetan plateau on which the latter is located originated from the ancient Asian plate with birth pattern of integral gradient and has been activating of mini uprising sign under the impact of the ancient Indian plate [3-5]. It is shown by Figure 4 and 5 as follows

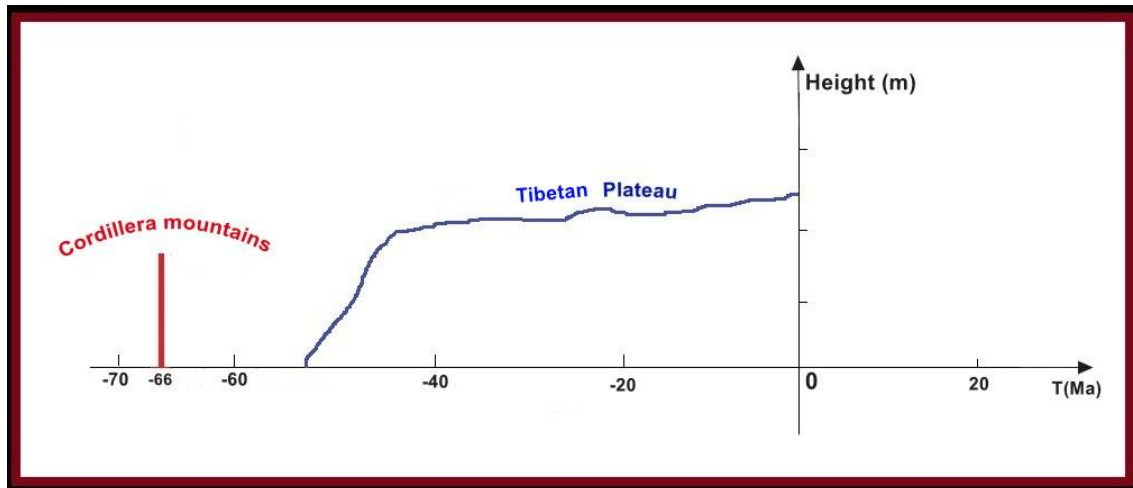


Figure 4: The Formation of The Cordillera Mountains and Tibetan Plateau with The Birth Pattern of Differential Mutation and Integral Gradient Respectively



Figure 5: The Colorful and Magical Sculpts of the Scenic Spot of Colorado Grand Canyon Originated from the Semisolid Substances in the Deep Layers of Mantle

- The attribute of former is ♂ and the counterpart of latter is ♀.

The Similar Features of them are Listed Below

- The rivers on which both former and latter are located originate from plateau and pour into gulf or bay;
- The outline of former is similar to that of latter;
- The indirect inducement of them was the celestial body love event happened between the XMoonAi(the predecessor of the Moon) and the unique supercontinent of the Earth 66 Ma ago that led to the dissembled and redistribution of the unique supercontinent and the existence of the Moon [6,7]. It is shown by Figure6 as follows

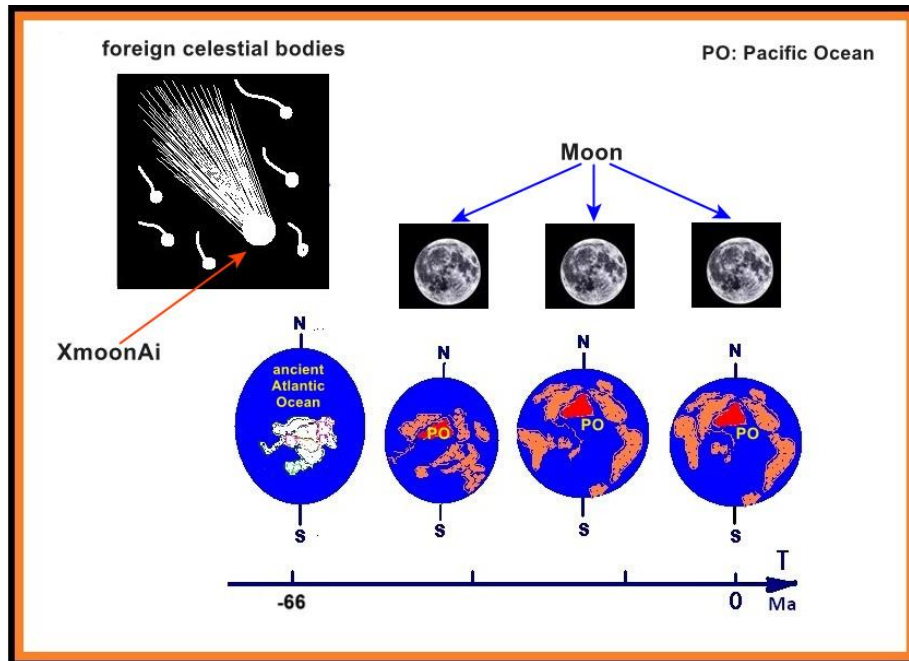


Figure 6: The Indirect Inducement for Both the Former and The Latter

- The features of them symbolize the structure of human brain (gyrus and sulcus), which implies that human race is the top species on the Earth attribute to the similar features between human race and celestial body. That is to say, the structure of human brain (gyrus and sulcus) is actually the mini miniature of the features of the celestial body of the Earth in some degree. It is shown by Figure 7 as follows.

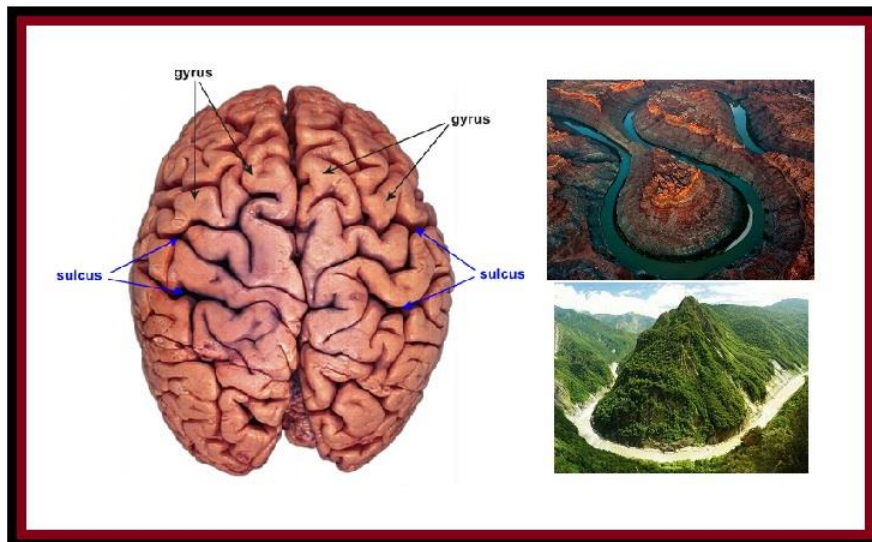


Figure 7: The Similar Features Between the Celestial Body of The Earth and Human Brain Structure

The higher grade the mammal is, the clearer their brain structure (gyrus and sulcus) would get and infinitely approach the features of the celestial body that they evolve out of. That is why human race is regarded as the top species of the Earth. It is shown by Figure 8 as follows,

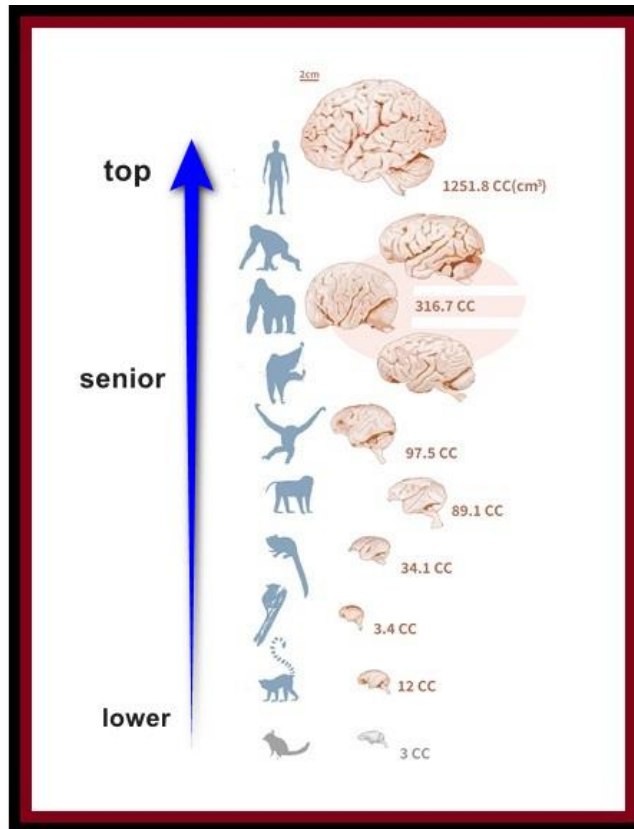


Figure 8: The Comparison of Brain Structures of Mammals

The Symbolized Meaning of Geometric Lines Composed of Yarlung Zangbo River and Its Extending Flowing to the End of Bay of Bengal

It is interesting that the geometric lines composed of Yarlung Zangbo River and its extending flowing (Brahmaputra River and Jamuna River) to the end of Bay of Bengal implies the part of human large intestine (Transverse, Descending, Sigmoid colon and Rectum). It is shown by Figure 9 as follows,

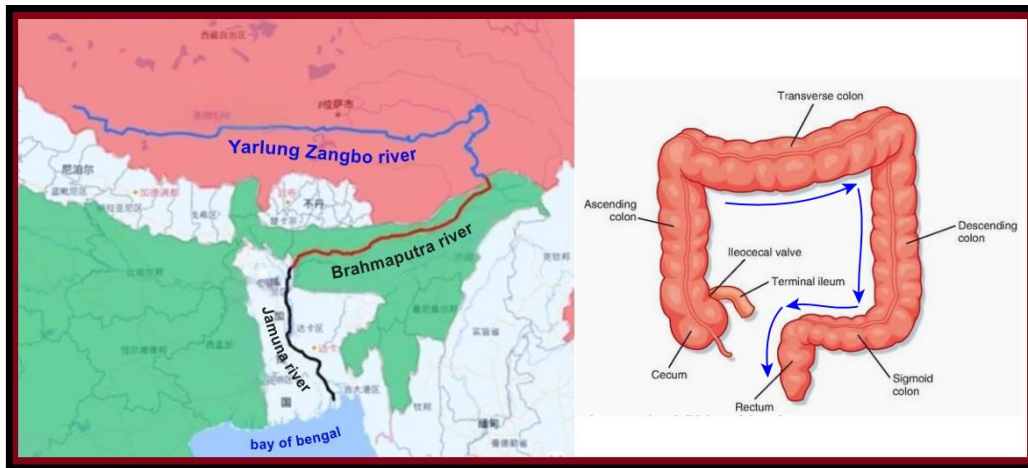


Figure 9: The Symbolized Meaning of Geometric Lines Composed of Yarlung Zangbo River and Its Extending Flowing to The End of Bay of Bengal

Discussion

Would it still be popular in geoscience circle in the 21 centuries for the hypothesis that the Cordillera mountains originated from the plate collision between the ancient American plate and the Pacific Ocean floor plate?

Since it is demonstrated by 100% that the Yarlung Zangbo Daxiagu originated from the plate collision between the ancient Asian and Indian plate, then it is natural to get the reasonable conclusion by the comparison between the Colorado Grand Canyon and Yarlung Zangbo Daxiagu that the American Cordillera mountains did not originate from the plate collision between the ancient American plate and the Pacific Ocean floor plate. However, it is demonstrated by the younger geological age and colorful and magic layers of rocks and abundant heavy metal element Of iron, manganese

and so on presented by the Colorado Grand Canyon and other spots that the Cordillera mountains came into being from the semisolid substances in the deep layers of mantle which were sprayed out and piled on the western edge of ancient American plate (wider north and narrower south) by the pattern of differential mutation during the celestial body love event happened between the XmoonAi (the predecessor of the Moon) and the unique supercontinent of the Earth 66 Ma ago.

Conclusion

Two points of conclusion could be obtained as follows through the comparison between the Colorado Grand Canyon and the Yarlung Zangbu Daxiagu:

- Human race is regarded as the top species due to the similar common features implied between it and the celestial body of the Earth;
- The Cordillera mountains originated from the semisolid substances in the deep layers of mantle caused by the celestial body love event between the XmoonAi (the predecessor of the Moon) and the unique supercontinent of the Earth 66 Ma ago.

References

1. Cai, D., Wang, X., Li, G., Jiao, R., Kohn, B., Zhu, W., ... & Lu, H. (2023). Fault systems impede incision of the Yarlung river into the Tibetan plateau. *Communications Earth & Environment*, 4(1), 200.
2. Karlstrom, K. E., Lee, J. P., Kelley, S. A., Crow, R. S., Crossey, L. J., Young, R. A., ... & Shuster, D. L. (2014). Formation of the Grand Canyon 5 to 6 million years ago through integration of older palaeocanyons. *Nature Geoscience*, 7(3), 239-244.
3. Henghua Yan (2025). The Celestial Body Language Implied by the Cordillera Mountains on the Western Coast of American Plate. *J Earth Sci Bioin* 1(1): 1-2. USOD-JESB-1001
4. Coney, P. J., Jones, D. L., & Monger, J. W. (1980). Cordilleran suspect terranes. *Nature*, 288(5789), 329-333.
5. Schwartz, J. J., Lackey, J. S., Miranda, E. A., Klepeis, K. A., Mora-Klepeis, G., Robles, F., & Bixler, J. D. (2023). Magmatic surge requires two-stage model for the Laramide orogeny. *Nature Communications*, 14(1), 3841.
6. Henghua Yan. The Simplified Evolution Tree of The Milky Way Galaxy Relating to The Origination of The Sun and the Moon.
7. Yan, H. (2025). The Jigsaw Recovery of the Earth's Unique Supercontinent 66 Million Years Ago. *J Water Res*, 3(2), 01-06.